

I learnt about the importance of taking the child's perspective into account and placing high importance on this on any view of safeguarding. I will ensure the child's view is placed highly in all my decision making in terms of safeguarding.

NSCP Annual Report 2024-25: Summary

The strength of these local partnerships will remain essential in navigating future challenges."
— Independent Scrutineer

Priorities

Reducing the Impact of Domestic Abuse

Learning, partnership development and practice

Improve Practitioner Knowledge and Responses to Mental Health

Children have a strong voice in informing the work of partners

Improving Responses to Risk Outside the Home

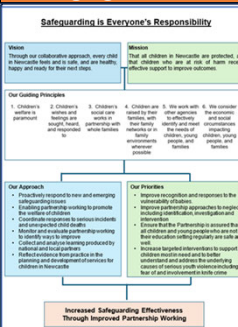
Strengthen Practice Responses to Neglect

Partners' Commitment

Over the last year there have been many changes to the partnership but our commitment to improving how we collectively work together to safeguard our babies, children and young people in the city remains strong. This is supported and enhanced by our ability to adapt to change and improvement.

As a partnership we never stand still and when new issues or policy changes arise, we are constantly considering how we can transform and redesign our ways of working to improve our safeguarding arrangements.

Changing How We Work Together



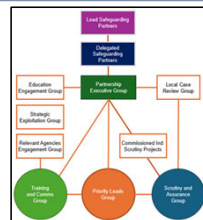
We have worked on a whole-system review throughout 2024-25. Focussing on how we work together to improve collaborative governance and embed strategic oversight through inclusive leadership, we have set our Partnership for transformation in 2025-26. Strengthening accountability through new ways of working together like the Scrutiny and Assurance Group and rotating Partnership Chair, we have worked together to ensure children and professionals shape our priorities, while multi-agency audits and reviews continue to drive improvement.

We are excited to see how our dynamic, inclusive culture continues to evolve, ensuring children's voices and safety remain central.

The Work of the Partnership

NSCP Strategic Delivery Plan 2025-2027

- A programme partner-led safeguarding sessions.
- Over 3,000 practitioners trained with 98% reporting training as engaging and useful
- New 2yr priorities and Strategic Delivery Plan
- New Website: New practitioner resource library created and improved communications
- New tools for neglect screening, domestic abuse, and father-inclusive practice



Capturing the Voice of Children and Families

- A city-wide survey delivered by Public Health, gathered responses from 5,992 pupils across 55 schools.
- Newcastle Upon Tyne Hospitals (NuTH) embedded the Voice of the Child across all 0–19 contact templates and hospital concern forms enabling capture of a vivid picture of the child's experience.
- A series of engagement events were held to embed practitioner experience in NSCP strategy development..

Reducing the Impact of Domestic Abuse

- Chair of NSCP took Chair of Domestic Abuse Partnership to provide a direct link for partnership working .
- Domestic Violence training mandatory for all Community Family Offer teams. This was formalised in the new Community Family Offer Workforce Plan.
- Every domestic abuse police report is now checked for a Clares Law 'Right To Know Opportunity'. This means that Newcastle MASH team is notified of 'high risk' subjects.

Improving Responses to Risk Outside the Home

- NSCP Thematic Review – ROTH and Vulnerable Adolescents. A significant report identifying commonalities between lived experience and approaches of providers.
- NuTH 0-19 service researching health assessments to children and young people indicated that health priorities for young people are very different from that of health professionals, informing the development of the new ROTH response pathway pilot.

Improve Knowledge and Responses to Mental Health

- Partners have worked together to deliver a bespoke "Make Every Contact Count" (MECC) offer which includes models of restorative practice, Solihull and Reducing Parental conflict and is a public health approach to supporting with all areas of health including mental health.
- NuTH have successfully rolled out the virtual "We Can Talk" training. This training is aimed at supporting staff in Acute Trusts to be better equipped to support children and young people when they present in mental health crisis.

Strengthen Practice Responses to Neglect

- Multi-agency development of a new Neglect screening tool for practitioners. The aim of this new resource is to facilitate greater confidence and consistency in practitioner identification of Neglect.
- NuTH 0-19 service led a multi-agency task and finish group to develop a strength-based Home Environment Assessment Tool (HEAT) which can be used by all services in partnership with families to objectively identify key areas of need and early intervention.

Safeguarding is everyone's responsibility, and together, we are making a difference.
— Statutory Partners

I just wanted to share that your training has changed my perspective and 'fear' of pushing boundaries in what I think is 'fair practice'. I truly believe that it is through gaining confidence as a newly qualified participant from your training making me prioritise 'fair practice for dads'
— Social Worker Training Participant