

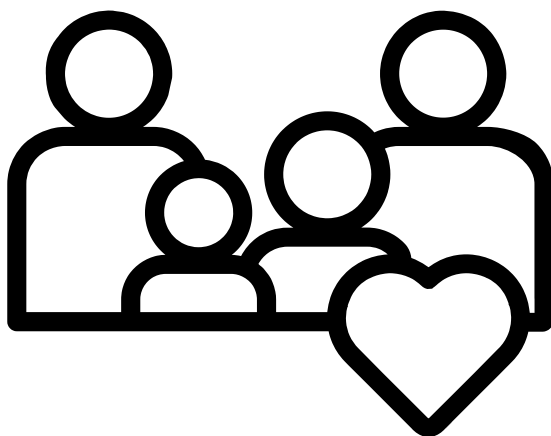
CHILDREN'S SOCIAL CARE AND EDUCATION ACRONYMS

Information for Parents, Carers and Families
and Practitioners



**This booklet has been produced by The Virtual School in collaboration
with Children Social Care**

**For any further information or queries on what is printed within this
booklet please contact us via email at
RelationalPracticeLeads@newcastle.gov.uk**



WHAT ARE ACRONYMS?



An acronym is a type of abbreviation consisting of a phrase whose only pronounced elements are the initial letters or initial sounds of words inside that phrase. Acronyms are often spelled with the initial letter of each word in all caps with no punctuation.

You may hear your social worker or teacher use acronyms and abbreviations. We know it can be confusing and hard to remember what they are referring to. Please use this guide to help!



CHILDREN'S SOCIAL CARE

ACE - Adverse Childhood Experiences

ADM - Agency Decision Maker: the person responsible for certain legal decisions within Children's Social Care, such as a plan of adoption

ANE - Adopt North East: the regional adoption agency

ASYE - Assessed and Supported Year in Employment: first year as a qualified social worker

BAME - Black, Asian, or Minority Ethnic

CA1989 - Children Act 1989

CAF - Common Assessment Framework

CAFCASS - Children and Families Court Advisory and Support Service

CAMHS - Child and Adolescent Mental Health Services

CAO - Child Arrangement Order

CiC - Child in Care

CiN - Child in Need

CCE - Child Criminal Exploitation

CCN - Child Concern Notice (from Police)

C&F (assessment) - Child & Family Assessment

CHSW - Children's Hospital Social Work

CO - Care Order

CP/P - Child Protection/Plan

CP - Connected Persons

CPN - Community Psychiatric Nurse

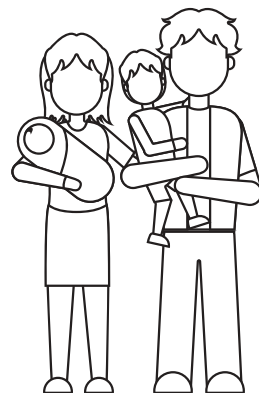
CSC - Children's Social Care

CSE - Child Sexual Exploitation

CSPR - Child Safeguarding Practice Reviews

CWD - Children with Disabilities

CYPS - Children and Young People's Service



DA – Domestic Abuse

DASH – Domestic Abuse, Stalking and Harassment and Honour-Based Violence: **04**
checklist of abusive behaviours.

DoLS – Deprivation of Liberty Safeguards: A legal framework to protect people in care who lack the capacity to consent to their care and treatment

DV – Domestic Violence

EDT – Emergency Duty Team

EH – Early Help

EPO – Emergency Protection Order

EUPD – Emotionally Unstable Personality Disorder

FASD – Foetal Alcohol Spectrum Disorder

FC – Foster Carer

FDAC – Family Drug and Alcohol Court

FGC – Family Group Conference

FGM – Female Genital Mutilation

FSW – Family Support Worker

ICO – Interim Care Order

ICPC – Initial Child Protection Conference

IDVA – Independent Domestic Violence Advocate

IFA – Independent Fostering Agency

IFS – Intensive Family Support

IO – Investigating (Police) Officer

IP – Injured Party: in police recording

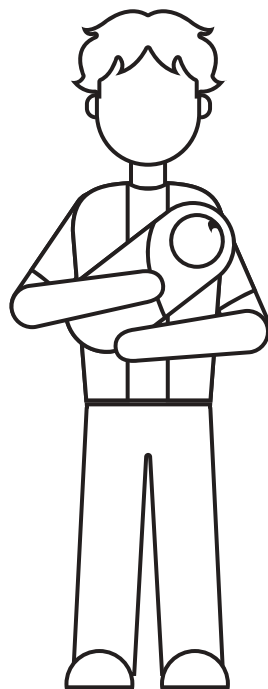
IRO – Independent Reviewing Officer

IRS – Initial Response Service

ISVA – Independent Sexual Violence Advocate

LA – Local Authority: the Council

LAC – Looked After Child: by the local authority: replaced by CiC



MAPPA - Multi Agency Public Protection Arrangements

05

MARAC - Multi-Agency Risk Assessment Conference

MASH -Multi Agency Safeguarding Hub

MATAC - Multi-Agency Tasking and Coordination: aims to reduce the number of repeated incidents of domestic abuse

MSET - Missing, Slavery, Exploitation, Trafficked: forum to discuss young people at risk of harm

MST - Multi Systemic Therapy

MSTCAN - Multi Systemic Therapy Child Abuse and Neglect

NIDAS - Newcastle Integrated Domestic Abuse Service: works with women and men experiencing domestic abuse

NQSW - Newly Qualified Social Worker

NRPF - No Recourse to Public Funds

NTaR - Newcastle Treatment and recovery services

NYAS - The National Youth Advocacy Service

OoH - Out of Hours duty team

PA - Personal Advisor/ Parenting Assessment

PACE - Police and Criminal Evidence Act 1984

PAMS - Parenting Assessment Manual Software: used with parents or carers with learning difficulties or additional needs.

PLAC - Previously Looked After Children

PLO - Public Law Outline: formally outlining that the Local Authority will issue Care Proceedings if certain things do not change

PPO - Police Protection Order

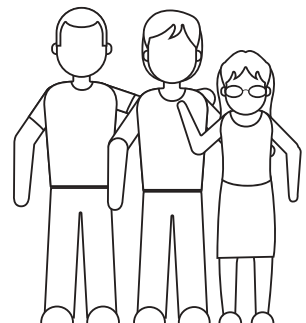
PSO - Prohibited Steps Order

RCPC - Review Child Protection Conference

RPL - Relational Practice Lead

ROTH - Risk Outside the Home

ROTL - Released on Temporary Licence



SCR – Serious case review: now referred to as Child Safeguarding Practice Reviews (CSPR)

SGO – Special Guardianship Order

SPOC – Single point of contact: 0 – 19 health visiting and school health service.

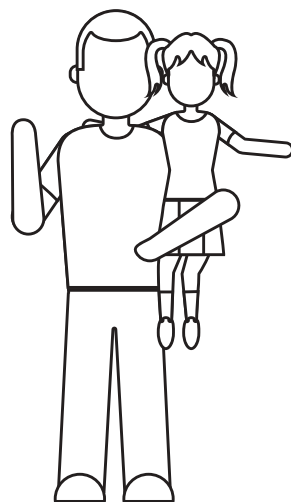
SSW – Supervising Social Worker/Senior Social Worker

SWET – Social Work Evidence Temple: for presenting social work evidence to the family courts.

S20 -voluntary care under section 20 of the Children Act 1989

S17 – an assessment to assess the needs of a child under section 17 the Children Act 1989

S47 – a child protection enquiry under section 47 of the Children Act 1989



TAC – Team Around the Child

TAF – Team Around the Family

UASC – Unaccompanied Asylum-Seeking Children

VA – Viability assessment



EDUCATION

AP – Alternative Provision

AR - Annual review (or EHCP)

ASD - Autism Spectrum Disorder

ADHD – Attention Deficit Hyperactivity Disorder

BTEC – Business and Technology Education Council: provider of vocational qualifications

CAT - Cognitive Ability Test

CME – Children Missing Education

CoP – Code of Practice: guidance on the Special Educational Needs process

DfE - The Department of Education

DSL – Designated Safeguarding Lead: responsible for child protection issues in school

DT – Designated Teacher: responsible for advocating for the educational needs of child in care and completing their PEPs

EAL - English as an Additional Language

EBSNA – Emotionally Based School Non-Attendance

ECT – Early Career Teacher (previously NQT)

EHCP – Education, Health, and Care Plan: A legal document that outlines the educational, health, and social care needs of children with special educational needs and disabilities

EHE – Elective Home Education

EOTAS – Education Other than at School

EP/EPS –Educational Psychologist/Educational Psychology Service

ePEP – Electronic Personal Education Plan: a statutory document to monitor the educational progress of children in care.

EWO – Education Welfare Officer

EYFS – Early Years Foundation Stage

EYPP – Early Years Pupil Premium

FAP- Fair Access Panel

FE - Further Education: education or training after secondary school

FEX - Fixed Term Exclusions from school: suspensions

FFT - Fischer Family Trust: a charity that provides estimates of pupil performance

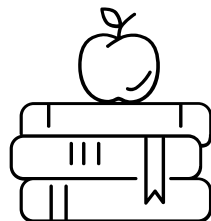
FSM – Free School Meals

G&T - Gifted and Talented

GCSE – General Certificate of Secondary Education

GLD - Good level of development: an Early Years judgement

GSP – Graduated support plan: Assess, Plan, Do, Review Special Educational Needs process



HE – Higher Education: university education/degree apprenticeships

HI – Hearing Impairment

HIARP – Hearing Impairment Additional Resourced Provision

HLTA – Higher level teaching assistant

IAG – Information, advice, guidance: careers

IBP – Individual Behaviour Plan

IEP – Individual Education Plan

ILP – Individual Learning Plan

INSET – In-service Education and Training

KS1 – Key Stage 1: Years 1-2 (5-7 year-olds)

KS2 – Key Stage 2: Years 3-6 (8-11 year-olds)

KS3 – Key Stage 3: Years 7-9 (12-14 year-olds)

KS4 – Key Stage 4: Years 10-11 (15-16 year-olds)

LADO – Local Authority Designated Officer: responsible for managing allegations against adults who work with children

LIP – Locality Inclusion Panel

MLD – Moderate Learning Difficulty

ND – Neurodiversity

NEET – Not in Education, Employment or Training

NQT – Newly Qualified Teacher: replaced by ECT

NVQ – National Vocational Qualifications

ODD – Oppositional Defiant Disorder

PA – Persistent Absence

PDA – Pathological Demand Avoidance

PEP – Personal Education Plan: a statutory document to monitor the educational progress of children in care.

PEX – Permanent Exclusion from school

PGCE – Postgraduate Certificate of Education

PP – Pupil Premium: government funding to improve educational outcomes for disadvantaged pupils in state-funded schools.

PP+/PPP – Pupil Premium Plus: funding for children who are looked-after by the local authority or were previously looked-after. The funding is managed and administered by the Virtual School

PRU – Pupil Referral Unit: a school that caters for children who can't attend a mainstream school due to exclusion or other difficulties.

PSHE+C – Personal, Social, Health and Citizenship Education



SAO – School Attendance Order

SATs – Standard Assessment Task/Test: administered to children in Year 2 and Year 6 to check their educational progress.

SALT – Speech and Language Therapy: Therapy to help individuals with speech, language, and communication difficulties

SEMH – Social, Emotional and Mental Health difficulties

SEN/D – Special Educational Needs/Disabilities: Educational requirements for children who have learning difficulties or disabilities

SENCo/SENDCo – Special Educational Needs/Disabilities Coordinator: A teacher responsible for coordinating special educational needs provision in a school

SENDIASS – Special Educational Needs and Disabilities Information, Advice and Support Service

SLD – Severe Learning Difficulty

SMART – Specific, Measurable, Achievable, Relevant, Time-bound targets.

SpLD – Specific Learning Difficulty

TAS – Team Around the School

UPN – Unique Pupil Number: 13-character code that identifies each pupil

VI – Visual Impairment

VIARP – Visual Impairment Additional Resourced Provision

VS – Virtual School: a team who promote the educational outcomes of children in care. Now extended to include previously looked after children and all children with a social worker.

Newcastle Virtual School | Newcastle City Council Newcastle Virtual School

VSH – Virtual School Head – the strategic lead of the Virtual school

WBL – Work Based Learning: training opportunity for 14-16 year-olds which compliments traditional school based learning

